

PARAMARIBO BIO-PLATEAUX CONFERENCE

TRANSBOUNDARY RIVER BASINS CONFERENCE IN THE GUIANAS

October 31 to November 2 – 2024



TABLE OF CONTENTS

1. General information Suriname Water Supply Company (SWM)
2. SWM Water Production Facilities
3. Water resources SWM
4. Challenges and current measures



Local challenges for water resources in the Guiana Shield: socio – cultural point of view



Drinking Water Supply Suriname

Responsibility of Ministry of Natural Resources

Watersuppliers:

1. SWM: N.V. Surinaamsche Waterleiding Maatschappij (1930)
2. NH/DW: Water Supply Service , Ministry of Natural Resources (1962)



Surinam Water Supply Company

- Established in 1932
- Before 1930 : Shallow Groundwater Use Through Dug Wells
- 1930 : Foundation of N.V. Surinaamsche Waterleiding Maatschappij
- 1930–1950 : Republiek Wellfield and Continued Investigations
- 1950–1970 : Development of Deeper Aquifers
- 1970–1990 : UNDP Investigations, Basis for Further Development
- After 1990 : The van Hattemweg wellfield
- After 2000 : Suriname Water Supply Master Plan 2000 – 2010; PARWAT Project
- After 2010 : Suriname Water Supply Master Plan 2011 – 2024
- 2016 : Take-over of Potable Water Production Stations from MNR

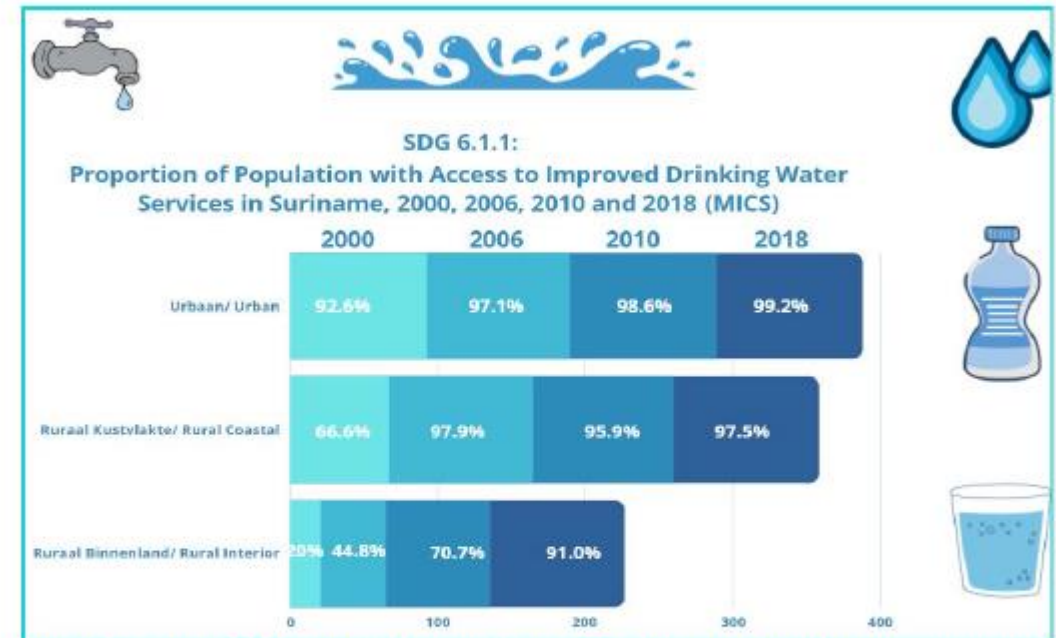


• Current Projects

Projects	Title	PM	PL
IDB (2022 - 2028)	Water Supply Modernization Program	A. Linger	
	1. NRW Reduction in Central Region		S. Pieters
	2. Upgrade Water Production Infrastructure		V. Soekhoe
	3. Institutional Strengthening and Modernization of SWM		R. Gayadin
IDB – ADAN (2024 - 2025)	Techno-economic analysis to desalination of brackish groundwater based on renewable energy	A. Hemai	E. Abdoel
Waternet (2024)	‘Samenwerkingsovereenkomst’ SWM en Waternet	A. Hemai	
	1. Development of Water Supply Plan (2025 – 2030)		M. Moekalil
	2. Research Asset Management		A. Nanden
	3. Risk Management		N. Landolf
CDB (2024)	Upgrade Water Supply Facilities – Fase 1	A. Hemai	R. Biswana
AFD (2024 - 2026)	Water Supply Infrastructure Improvement Project for Greater Paramaribo	A. Hemai	
	Rehabilitation of van PS Hattemweg		S. Ramnath
	Upgrade production station PS Moengo		B. Isrie

General information SWM

- Quality Management System: ISO 9001:2015 Certified
- Total Water production: 52,8 million m³ per year (Approx. 6000 M³/hour)
- Total active and registered service connections: 144,542
- Transmission and distribution network of 4700 KM



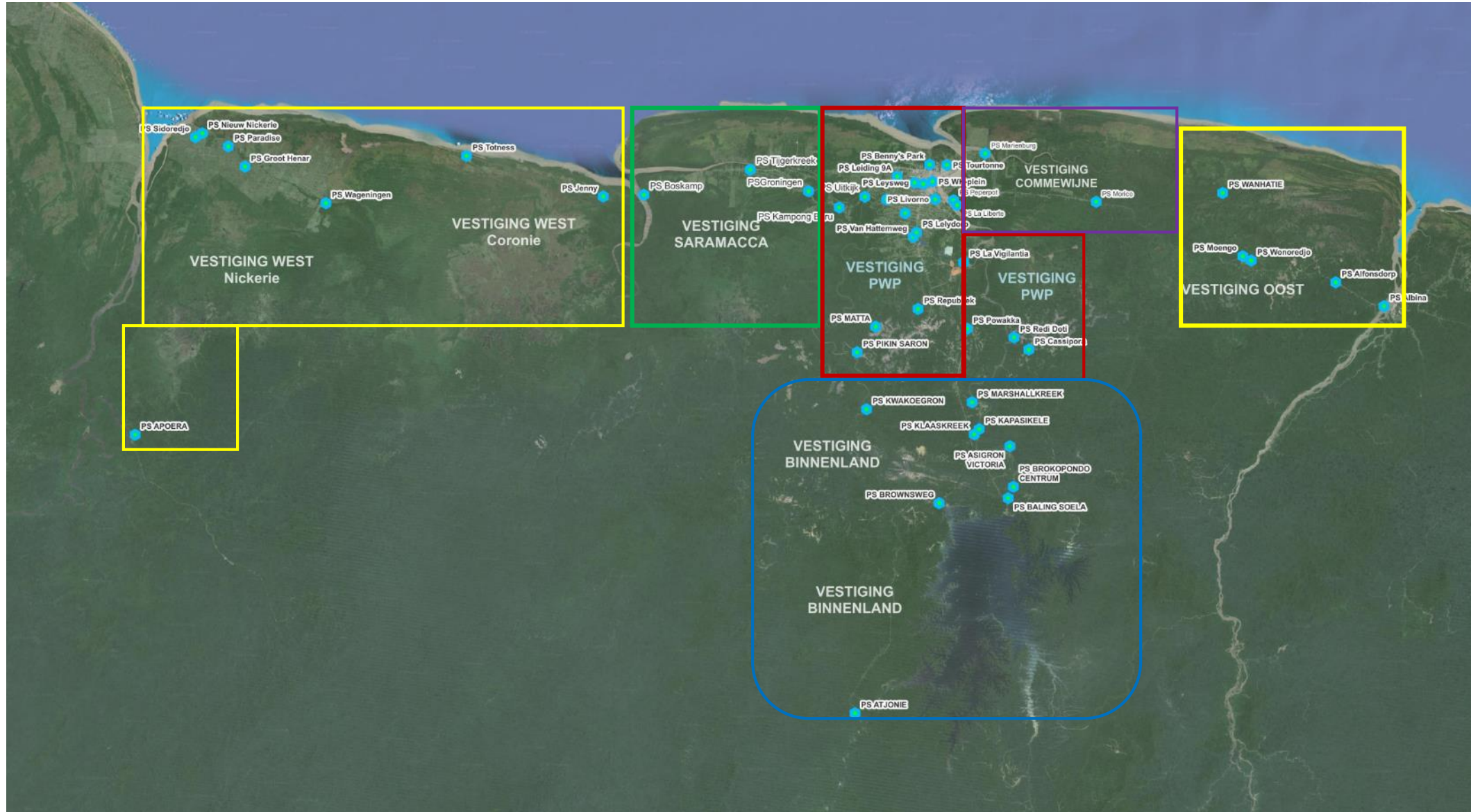
Grafiek 6.5: Aandeel van de bevolking met toegang tot verbeterde drinkwatervoorzieningen in Suriname, 2000, 2006, 2010 en 2018

Graph 6.5: Proportion of Population with Access to Improved Drinking Water Services in Suriname, 2000, 2006, 2010 and 2018

- <https://www.youtube.com/watch?v=3Y9B9TAvDbo&t=66s>

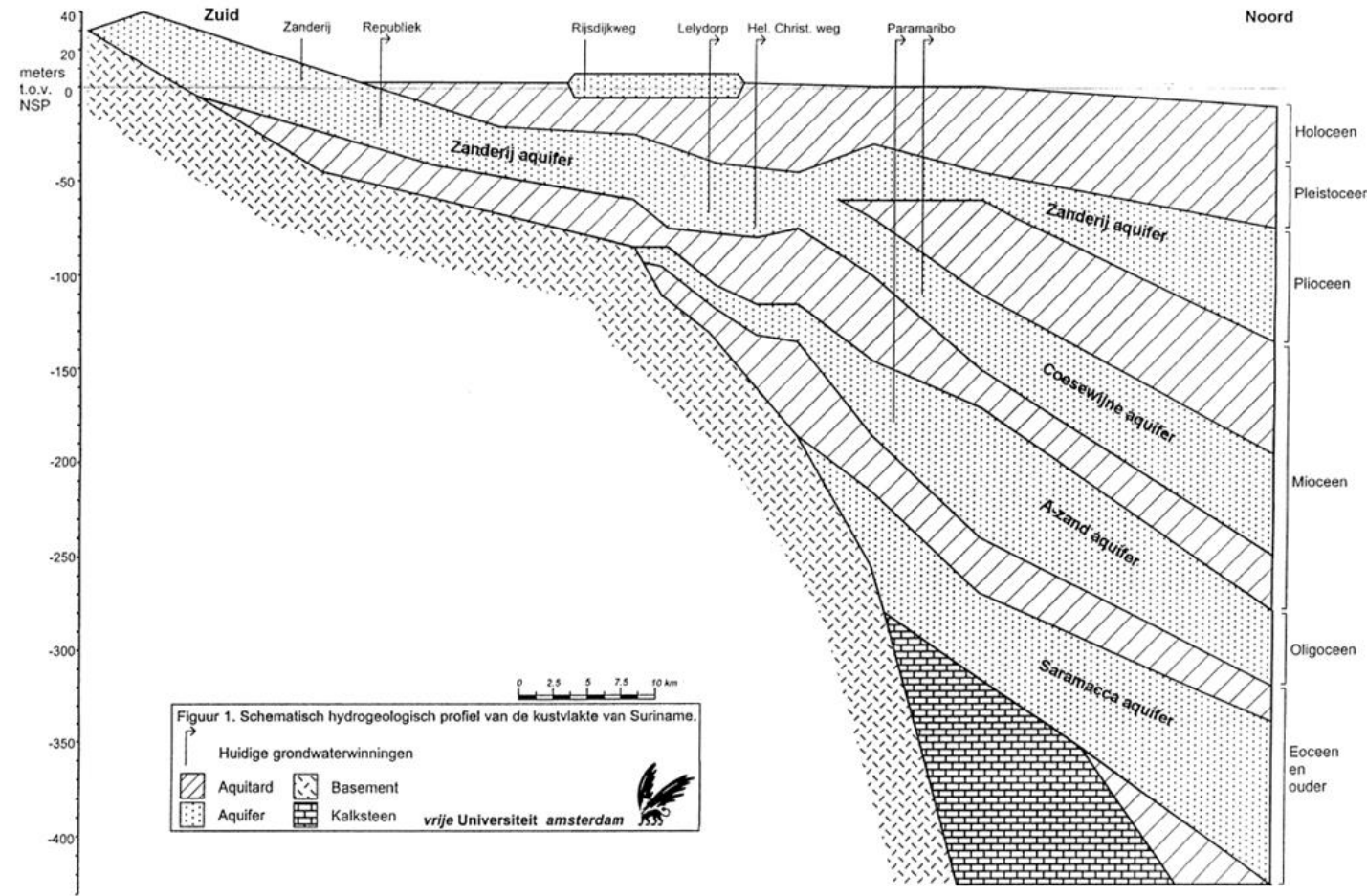


SWM Water Production Facilities



Water resources

- Ground water (confined and unconfined aquifers)
 - Zanderij
 - Coesewijne
 - A-sand
- Surface water:
 - Cottica River – PS Moengo
 - Suriname River – Water Production station Commewijne



Local challenges for water resources in the Guiana Shield

Challenges	Current Measures
Absence of laws and regulations for protection potable water, water resources and integrated resources managment	Legislation is being drafted by Ministry of NR
Building a Climate Resilient Water Infrastructure	Research and studies (CDB) Cooperation with CWUIC, IDB, development of toolkits for climate resilient infr.
Decrease of water supply during dry seasons :	Increase of water production capacity (IDB)
• Higher consumption of water	Delivery by Water trucks
• Decrease of water levels	Research and development of new wells (CDB)
• Absence of consumer awareness	Folders through Social media
Reduction of Non Revenue Water	Ongoing Program for NRW Reduction
• Water loss by damage of piping during excavation works by third parties	Consultations with relevant stakeholders
• Water loss by Water theft	When discovered, a fine will be given



Challenges	Current Measures
Flooding of production facilities	Studies for other production facilities in the area not prone to flooding
Salt Water intrusion (mostly in northern wells)	Feasibility study for Water production facility Techno – economic feasibility studies (CDB , IDB) Currently mixing of water with southern region
Integrated Water Resources Management for the hinterland (Especially where sanitation meats water supply resource)	More attention required from Government (Absence of Water Laws)
Contamination of Water resources (leaks, spills)	More attention required from Government (Absence of Water Laws)
Capacity Building to address Climate Change and Environmental issues	Include in financed programs/projects



Addressing most of the challenges with:

- Development of Water Supply Plan (2025 – 2030) together with World Waternet
- Development of Water Resources Management Plan
- Implementation of Water Safety Plans



THANK YOU FOR YOUR ATTENTION.



www.bio-plateaux.org

